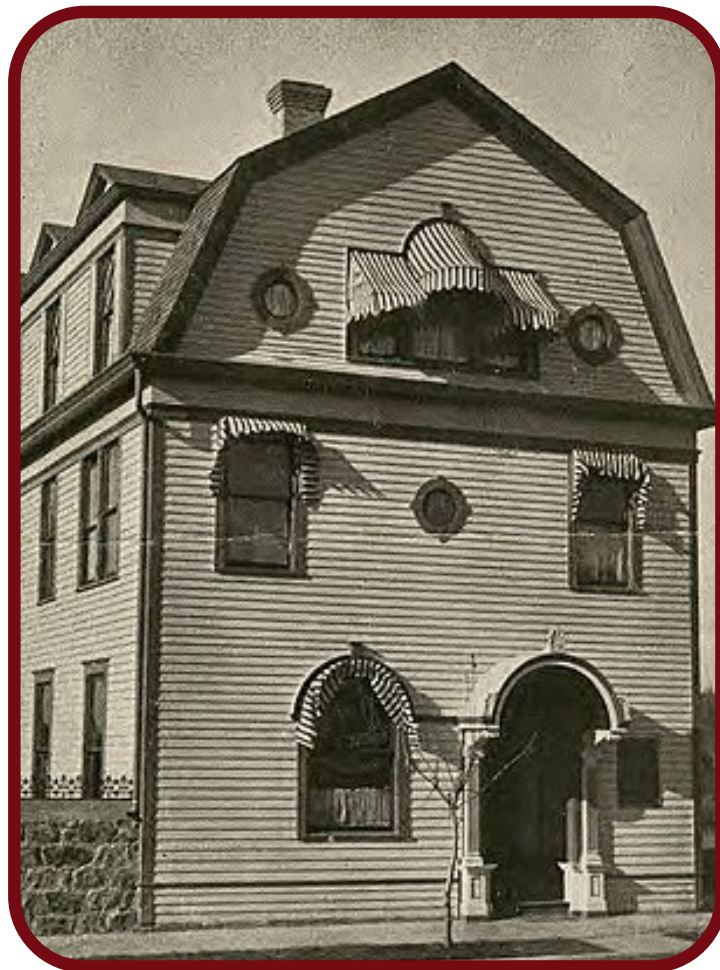




Minnewaska

COMMUNITY HEALTH SERVICES



Minnewaska Hospital was a building in Starbuck, Minnesota on the National Register of Historic Places. When it was built in 1899–1900 for Dr. C. R. Christenson, It was the only hospital between Minneapolis and Fargo, North Dakota. It was demolished in January 2013 after standing vacant for more than a decade. It was removed from the National Register in January 2019.



Contact 320-239-4775
500 Holly Ridge Dr. Starbuck, MN

info@mchs-healthcare.org
www.mchs-healthcare.org

Hoffman Harvest Festival
Second Weekend in August at Hoffman Senior Living. Party in the parking lot! Live music, drinks and cake.



Hoffman Farmer's Market
Join us for a meal served by Hoffman Senior Living
August 23rd, 2023
More details to come



FUN FACT

To deal with summer heat, birds have a behavior called gular fluttering. This is when the bird will open its mouth and “flutter” the upper throat muscles to promote heat loss, similar to panting in dogs.



DOUBLE-CRESTED CORMORANT
GREG LAVATY





RESIDENTS AT GLACIAL TRAILS ARE ENJOYING SPRING BY PLANTING SEEDS FOR THEIR FLOWER POTS.



Annual Fundraiser

65th Anniversary of Minnewaska Lutheran Home not for profit

Save
the
Date

September 18, 2023 | Minnewaska House

Social Hour | 5:00 pm

Dinner | 6:00 pm

Raffle/Silent Auction to follow



Minnewaska
COMMUNITY HEALTH SERVICES



BEV'S TWIN DAUGHTERS ENTERTAINED THE RESIDENTS AT MINNEWASKA LUTHERAN HOME WITH A DAY IN THE TROPICS!

Board of Directors

Kayo Aslagson- Chairman
Minnewaska Lutheran Church

Peter Brandt- Vice Chairman
Trinity Lutheran Church

Bob Hendrickson- Treasurer
Member at Large

Faith Anderson- Secretary
St. John's Lutheran Church

Alice Reese- Director
West Zion Lutheran Church

Stan Stark- Director
Messiah Lutheran Church

Melody Sletten- Director
Immanuel Lutheran Church

Warren Hagestuen- Director
East Zion Lutheran Church

Robert Ranum- Director
Inherred Lutheran Church

Bruce Prause - Director
Fron Lutheran Church



Deputy Josh Owen was laid to rest on April 15th, 2023, after a tragedy occurred that took his life. Deputy Owen truly lived a life of selfless service. He was killed on his 44th birthday and is survived by his wife, son, parents and K9 partner. We will continue to keep your loved ones in our thoughts and prayers.

EMPLOYEE SPOTLIGHT

Katelyn Elwood



My name is Katelyn Elwood, I am 27 yrs old and I was born and raised in Glenwood, MN area. I have two children, Addilyn who is 5 yrs old and Amelia who is 1 yr old. We also have one little 10 lb dog named Odie. I love the outdoors. My family and I love being at the lake on the water, even if it is frozen. We enjoy fishing and hunting and I am the avid deer hunter. My girls and I love going for walks and getting dairy queen treats on a nice warm day.

I recently started at Holly Ridge Manor as a Clinical Nurse Supervisor (CNS). When this position opened, I was thrilled to be able to serve those within my own community. I have been in the profession for 12 years, starting as a CNA and now working as a RN, BSN. I started working as a CNA at Minnewaska Lutheran Home when I was a teenager. I have always had the best teams with Minnewaska Community Health Services, and I am happy to be back to further advance my career with MCHS!

I have worked in the geriatric field, long-term care and hospice services as a nurse. Geriatric's is where my heart is. I enjoy being able to be a part of not only residents' lives, but also become a part of their family.

The MCHS mission is the focus of how I conduct myself as a nurse. My goal as a nurse is not only to serve those in need, but to involve each individual to participate in reaching their maximum ability to be able to serve themselves and the others surrounding them. Additionally, I wish to include this mission with my residents and also my fellow team members as everyone has the opportunity to grow to reach their fullest potential.

MCHS Starbuck Auxiliary Heritage Days Fundraiser

SATURDAY,
JULY 1ST,
2023

We will be holding our annual lunch and bake sale fundraiser at Minnewaska Lutheran Home. There will be a meal to purchase; Taco in a bag with rommegrot included, bake sale, and white elephant sale! During this time there will also be the quilt raffle drawing at 1pm.

9AM-1PM IN THE AIR
CONDITIONED
COMMONS AREA AT
MINNEWASKA
LUTHERAN HOME

Join
US

You're Invited



Minnewaska Community Health Services Auxiliary 2023 Quilt Raffle



Quilt name: Chandelier

Size: Queen

Quilt made and donated by:

Bits N Pieces Quilt Group

Drawing to be held July 1, 2023 1 pm
at Minnewaska Lutheran Home

TICKETS ARE \$2.00/EACH OR 6 FOR \$10

Tickets available at:

Minnewaska Lutheran Home {SW Entrance & Therapy Entrance)

Nutcracker Cafe , Samuelson's Drugstore

& any MCHS Auxiliary Member

You do not need to be present to win.

JOIN
NOW

The MCHS Auxiliary is currently looking for new members to join. We meet monthly and hold two fundraisers per year. If you are interested in joining, please contact Michelle Ehrenberg, MLH Administrator.



Minnewaska
COMMUNITY HEALTH SERVICES

Auxiliary



JOIN OUR TEAM

Achieve your educational goals in healthcare and we'll pay for it!



Minnewaska
COMMUNITY HEALTH SERVICES

<https://mchs-healthcare.org/>  (320) 239-4775 

A community of services, grounded in faith, providing person-centered care that encourages all people to reach their highest potential.

CHECK OUT OUR CURRENT OPENINGS AND JOIN OUR TEAM!
[HTTPS://MCHS-HEALTHCARE.ORG/EMPLOYMENT/
EEO/AA](https://mchs-healthcare.org/employment/eo/aa)



Minnewaska
COMMUNITY HEALTH SERVICES





THE RESIDENTS AT HOFFMAN SENIOR LIVING AND HOLLY RIDGE MANOR ENJOYED AN ALL-AMERICAN BASEBALL PARK LUNCH AND BALL PARK SNACKS LIKE BEER, POP, PEANUTS, POPCORN AND WARM PRETZELS WITH CHEESE! LET'S GO TWINS!



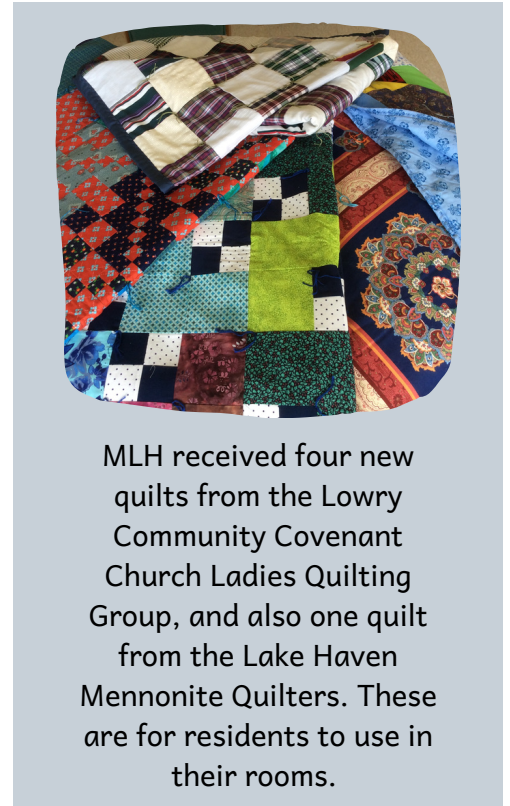
Donations to Home Development

Restoration is needed for the Minnewaska Lutheran Home clock tower. We are asking for donations to restore the clock to its original charm. To give towards this project, online donations are accepted thru our website on our donation page:

<https://minnewaska-home-development.snwbll.com/giving-portal> or mail a donation to PO BOX 40 Starbuck, MN 56381
Thank you for your generosity.



**M
C
H
S**



MLH received four new quilts from the Lowry Community Covenant Church Ladies Quilting Group, and also one quilt from the Lake Haven Mennonite Quilters. These are for residents to use in their rooms.



Say Hello to our MLH Leadership Team! Pictured on the left starting at the bottom of the pyramid, left to right: Shane Nelson, Angela Meierding, Joni Erickson, and Nate Christensen
Middle Row: Michelle Ehrenberg, Julie Amundson, and Amanda Heyda.
Top Row: Adri Dominguez, Becky Norsworthy, and Jen Goff.

Therapy Services



MINNESOTA'S PREMIER
REHAB CENTER. WE OFFER
PHYSICAL, SPEECH, AND
OCCUPATIONAL THERAPY.



Physical therapy professionals focused on building your strength.

Our Physical Therapists work to improve your ability to move your body, to increase your strength, and to maximize your ability to move within your environment. Following a thorough evaluation by the licensed Physical Therapist, an individual treatment program is established in conjunction with your physician.

Occupational therapy helps you get back to your life.

Occupational Therapy refers to the "occupations of life" which are the tasks of everyday living. OTs assist you in gaining independence with the basic skills required to take care of yourself. These "Activities of Daily Living" (ADLs) include feeding, grooming, dressing, bathing, and home-making skills.

Speech pathology programs developed for individual needs.

Speech-Language Pathologists provide assessment and specialized treatment programs for overcoming speech, language, comprehension, cognitive (thinking) or voice disorders. Our SLPs are trained in treating swallowing disorders, known as dysphagia, a common problem in the elderly.

We treat a variety of conditions.

- Upper Extremity
- Lower Extremity
- Muscle Imbalances
- Urinary Incontinence
- Arthritis
- Osteoporosis
- Neurological Disorders
- Falls & Balance Loss
- Stroke Recovery
- Knee & Hip Pain

Senior Spotlight

Brandi plans to work at Alomere Health in Alexandria as a phlebotomist.

McKaylyn plans to attend South Dakota State University and will major in nursing!

Kelsey will be attending St. Norbert College in WI next year, majoring in Nursing!



Cassandra plans to attend Ridgewater College for cosmetology, after that she plans to further her education to elderly and senior hair care!

Elizabeth will be pursuing a pre-medical track studying biology and global health at Harvard University next year!

Brooke will be attending South Dakota State University to major in nursing!





Kim Rolling has worked in long term care for more than 20 years! Currently working as the LALD at Country view Senior Living. Being a nurse can many times be challenging; however, the rewards far outweigh the challenges. Kim is a Mom of 4; and Grandma of 5. She enjoys spending time with her family, traveling, camping, and anything outdoors. She always feels very grateful to be surrounded by great co-workers and tenants every day. They are a smaller community of 28 apartments, so they get to know one another quite well. Their tenants become like part of their own family.



Country View
Walnut Grove

TOMS RECEIPTS

Drop-off locations are at Minnewaska Lutheran Home in the front main entrance, administrative/therapy entrance, and the main entrance to Glacial Trails Memory Care.

\$ The funds we receive support our residents. Thank you!

[HTTP://WWW.TOMSFOODMARKET.COM/INVOLVEMENT.PHP](http://www.tomsfoodmarket.com/involvement.php)



MCHS Inclusion Statement: Different perspectives, unique ways of thinking — We recruit, and hire based on capability and performance — regardless of race, gender, sexual orientation, gender identity or expression, lifestyle, age, educational background, national origin, religion, or physical ability. We want every MCHS employee to feel our commitment to showing respect for all and encouraging open collaboration and communication.